

Dr. Kiran C. Patel College of Osteopathic Medicine

COLLABORATIONS

Faculty and Staff Newsletter
Spring 2020

Cover Story... GLOBAL OUTREACH

B.S. in Public Health Program
Assists Earthquake Victims
in Puerto Rico



SPRING 2020

Volume 4, Number 2

Collaborations

is produced by
NSU Dr. Kiran C. Patel College
of Osteopathic Medicine
3200 South University Drive
Fort Lauderdale, FL 33328-2018
osteopathic.nova.edu
[facebook.com/novaosteopathic](https://www.facebook.com/novaosteopathic)
[instagram.com/nsukpcom](https://www.instagram.com/nsukpcom)

DR. KIRAN C. PATEL COLLEGE OF OSTEOPATHIC MEDICINE

ELAINE M. WALLACE, D.O., M.S.⁴
Dean

EXECUTIVE EDITORS

SCOTT COLTON, B.A., APR
HPD Director of Medical Communications
and Public Relations
(954) 262-5147 • scottc@nova.edu

JOEY GARCIA, B.S.
Medical Communications Coordinator
(954) 262-4254 • jg1995@nova.edu

GRAPHIC ARTIST

BRANDEE EVANS
HPD Graphic Designer

CONTRIBUTOR

ODESSA PEMBERTON
Employee Services Consultant I

STAFF LIAISON

ROBERTA DUENAS
Manager of Administrative Services

COVER PHOTO

KPCOM student Amanda Nazco, seated
next to a 98-year-old patient, serves as
a translator during a physical exam.

NATIONAL AWARD NSU Wins 1st PLACE for MAGAZINE!

aacom

American Association of
Colleges of Osteopathic Medicine



NOVA SOUTHEASTERN
UNIVERSITY

NSU
Florida

COM Outlook Wins First Place in AACOM Excellence in Communications Program

In March, the KPCOM's *COM Outlook* magazine captured the first-place prize in the best magazine category in the national American Association of Colleges of Osteopathic Medicine (AACOM) Excellence in Communications (EIC) Awards Program.

"Winning this award is a wonderful achievement," said Scott Colton, B.A., APR, director of medical communications and public relations for the KPCOM and the Health Professions Division. "It takes a truly collaborative effort to create each issue of *COM Outlook*, which makes winning the award especially gratifying."

Colton, who spearheads the magazine's editorial content, credits the talented team from NSU's Office of Publications and Creative Services for playing a major role in the magazine's award-winning success. "It truly is a pleasure to work with such wonderful colleagues who complement the magazine's journalistic strength with their artful mix of editing, design, and art direction."

AACOM's EIC Awards Program is designed to recognize the important role communications plays in advancing osteopathic medical education and the profession. It also seeks to inspire higher levels of performance among its members.



LIVING THE VALUES RECIPIENTS

The purpose of the Living the Values program is to recognize coworkers who are living NSU's eight core values on a continuum. Two winners will be selected monthly representing both a faculty and a staff member when applicable.



LASH

LISA WALTHER, M.S., and BARBARA LASH, M.S., LMHC, NCC, who are both KPCOM career-counseling advisers, were the February student-centered core value staff winners.

CONGRATS!



KPCOM Graduates Record Numbers

During the 2019–2020 academic year, a record number of KPCOM degrees were conferred. In May, 243 D.O., 61 Master of Public Health, 31 Master of Science in Biomedical Informatics, 9 Master of Science in Disaster and Emergency Management, 4 Master of Science in Nutrition, 1 Master of Science in Medical Education, and 6 Bachelor of Science in Public Health degrees were bestowed.

SUPPORT



EXCHANGE



SHARING



TEAMWORK



SUCCESS



BINDU MAYI WINS PROFESSOR OF THE YEAR STUEY

Bindu Mayi, Ph.D., M.Sc., professor of microbiology, won the Professor of the Year Award at the 22nd Annual NSU Student Life Achievement (STUEY) Awards presented at a virtual ceremony on April 23. For those unfamiliar with the STUEY Awards, the event was created in 2000 to honor the people and organizations that best exemplify the NSU Core Values of academic excellence, student centered, scholarship/research, integrity, innovation, opportunity, diversity, and community.

"I am honored to receive this award, and I am grateful to be recognized for something I absolutely love doing," said Mayi, who enjoys interacting with her students. "My congratulations to the winners in the other categories and to all the nominees. It is a privilege to be counted among them."

In addition to her dedication to her students, Mayi has been a valuable asset to NSU and the South Florida community during the COVID-19 pandemic. During the past few months, Mayi has been a go-to expert for many media outlets and has been featured in the *Sun Sentinel*, on *Local 10 News*, and in many other publications and news programs.

While the event is traditionally held in true Academy Awards style with photographers, festive receptions, and speeches, this year's virtual ceremony reminded the NSU community that despite the ongoing COVID-19 pandemic, the university would continue to function smoothly.



OTHER NOMINEES REPRESENTING THE KPCOM WITH DISTINCTION

- **Student of the Year**
Regina Zambrano
- **Executive of the Year**
Hilda De Gaetano, D.O., M.S.
- **Alumni of the Year**
Carisa Champion, D.O.
- **Graduate Organization of the Year**
American Medical Women's Association
- **Corporate Partner of the Year**
Werner Kahn Studios

FACULTY/STAFF ACHIEVEMENTS AND PRESENTATIONS



CHEEMA



COLINDRES



COLTON



DEL ALAMO



DE GAETANO



GORDON



JACOBS



KESSELMAN

Fareeda Baksh-Deen, M.D., assistant professor in the Student Medical Center, gave birth to a baby boy on April 17.

Amanpreet Cheema, Ph.D., assistant professor and program coordinator of the Gulf War Illness Clinical Trials and Interventions research operations at the Institute for Neuro-Immune Medicine (INIM), and **Nancy Klimas, M.D.**, professor and director of the INIM, were awarded a \$500,000 monetary collaborative Clinical Evaluation Award with the Roskamp Institute, which will be used to conduct a phase one study. Additionally, she coauthored "Unravelling Myalgic Encephalomyelitis/Chronic Fatigue Syndrome (ME/CFS): Gender-Specific Changes in the MicroRNA Expression Profiling in ME/CFS" with several colleagues. They were **Lubov Nathanson, Ph.D.**, assistant professor and director of the genomics laboratory at the INIM; **Leonor Sarria**, lab research assistant II; **Fanny Collado, R.N.**, clinical research nurse; and **Nancy Klimas** in the March issue of the *Journal of Cellular and Molecular Medicine*.

Petra Colindres, M.A., RDN, LDN, IBCLC, assistant professor in the Department of Nutrition, was selected to participate in the 2020 Emerging Nutrition Leader in Maternal Child Health Training Institute. This leadership program focuses on maternal child health and combines nutrition fundamentals with public policy and advocacy. The goal is to mentor future nutrition leaders to transition the health care system from one that focuses on sick care to one that is more prevention oriented.

Scott Colton, B.A., APR, HPD director of medical communications and public relations, earned a three-year renewal of his Accredited

in Publication Relations (APR) certification from the Public Relations Society of America.

Jeffrey Cournoyer, B.S., ATC, exercise physiologist and head of the clinical and research physiology labs at the Institute for Neuro-Immune Medicine, published his inaugural scientific article "Effects of 100 Percent Oxygen During Exercise in Patients with Interstitial Lung Disease" in the March issue of the *Respiratory Physiology and Neurobiology* journal. Additionally, Cournoyer was invited to present at the American College of Sports Medicine 2020 Annual Meeting and World Congress (ACSM) in San Francisco, California, but the event was cancelled. Instead, the ACSM is publishing his presentation in a supplemental issue of the *Medicine & Science in Sports & Exercise* journal.

Travis Craddock, Ph.D., associate professor and director of the Institute for Neuro-Immune Medicine (INIM) Clinical Systems Biology, and **Nancy Klimas, M.D.**, director of the INIM and endowed chair of clinical immunology, coauthored the article "Towards a Treatment for Gulf War Illness: A Consensus Docking Approach." The article was published in the March issue of the *International Journal of Military Medicine*.

Hilda De Gaetano, D.O., M.S., FAAP, FACOP, senior assistant dean of preclinical education and professor of pediatrics, discussed the topic "Is it Safe to See Pediatrician for Vaccines During Coronavirus Pandemic?" on WPLG *Local 10 News* on April 17.

Ana Del Alamo, M.S., administrative director of the Institute for Neuro-Immune Medicine (INIM), established the initial INIM Weekly

Wednesday Happy Hour. All team members are invited to join a zoom meeting for 15 to 30 minutes at the end of each day to connect and share a drink, a laugh, a win, and a resource/recommendation for others.

Marilyn Gordon, Ed.D., RDN, CSSD, LDN, registered dietitian/sports nutritionist in the Department of Nutrition, wrote a chapter titled "Nutrition for Teachers" that was published in the book *Teacher Self-Care: A Joyful Ode to Good Health*.

Robin J. Jacobs, Ph.D., M.S.W., M.S., M.P.H., associate professor of biomedical informatics and medical education and director of graduate medical education, authored two articles that were presented at the 14th Annual International Technology, Education, and Development Conference held March 2-4 in Valencia, Spain. They were titled "Predictors of Research Self-Efficacy in Medical Students: Recommendations for Educators to Promote Student Engagement in Research During the Undergraduate Years" and "Medical Students' Attitudes and Perceptions Towards Learning Research: A Call for a Paradigm Shift in Medical Education."

Marc M. Kesselman, D.O., FACOI, FACC, FACR, director of the Division of Rheumatology and head of the NSU rheumatology research unit, coauthored the article "Recognition and Management of Cutaneous Polyarteritis Nodosum Versus Livedoid Vasculitis: A Case Report." He coauthored the article with Miguel Villacorta, D.O., and third-year KPCOM students Jessica Forbes and Milad Heydari, which appeared in the January 27 issue of the *Cureus Journal of Medical Science*. He also coauthored "Uveitis as a Predictor of

FACULTY/STAFF ACHIEVEMENTS AND PRESENTATIONS



KLIMAS



LAIRD



MAURICE



MAYI



MIKATI



MULLIGAN



NATHANSON

Predisposition to Autoimmunity” with **Bindu Mayi**, Ph.D., M.Sc., professor of microbiology, and second-year students Jillian A. Leibowitz and Arden T. Woods for the March 28 issue of the *Cureus Journal of Medical Science*.

Nancy Klimas, M.D., director of the Institute for Neuro-Immune Medicine and endowed chair of clinical immunology, was a featured guest on *connectingvets.radio.com*, where she discussed the topic “Some Gulf War Veterans Could Be at Higher Risk for COVID-19.” Additionally, she coauthored the article “Post-Exertional Malaise Is Associated with Greater Symptom Burden and Psychological Distress in Patients Diagnosed with Chronic Fatigue Syndrome” in the March issue of the *Journal of Psychosomatic Research*. Klimas also participated in a National Institutes of Health review panel and was interviewed by *connectingvets.radio.com* about the article “Brain Inflammation in Veterans with Gulf War Illness,” which can be found at sciencedaily.com/releases/2020/02/200213175919.htm.

Holly Laird, D.O., instructor in the Department of Osteopathic Principles and Practice, recently passed her board certification exam in neuromuscular medicine.

Linda E. Maurice, M.A., director of community education and lifelong learning, was a featured expert in the ABC News article “The Unspoken COVID-19 Toll on the Elderly: Loneliness.” According to Maurice, who is offering her Lifelong Learning Institute members virtual classes, “The older adults I work with, I know that they crave a schedule and they crave that socialization,” she said, adding that she

believes she can “help them not just physically but emotionally stay healthy.”

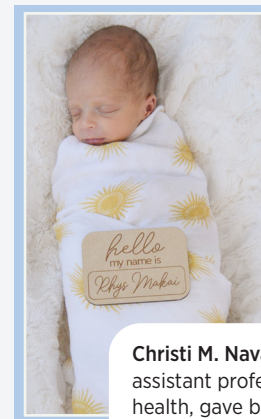
Bindu Mayi, Ph.D., M.Sc., professor of microbiology, appeared on *WINK News* in Fort Myers several times in April to discuss a range of COVID-19 topics. They included “Could Expanded Testing Bring Life Back to Normal Sooner?” “Why Florida’s Changing ‘Peak Date’ Could Be a Good Thing,” “Health Officials Association Says Surge in Health Care Workers Needed to Safely Get Back to Normal,” “Can Contact Tracing Slow or Stop Spread of COVID-19?” and “Just How Many People Have Recovered from Coronavirus?” She was also featured on *WPLG Local 10 News* on March 2 to discuss the latest developments, as well as prevention techniques, related to the coronavirus pandemic.

Nadine Mikati, Ph.D., RDN, LDN, associate professor of nutrition, was awarded an NSU Quality of Life Grant for her project “Recipes for Health: A Community-Based Nutrition Intervention.” The aim of this project is to demonstrate healthy eating and hands-on cooking practices to empower individuals to manage chronic disease through diet and lifestyle changes. The project will be conducted as a joint effort between NSU and two community partners: Baptist Health South Florida and Common Threads.

Deborah A. Mulligan, M.D., FAAP, FACEP, assistant professor of pediatrics, appeared on *iHeartRadio’s First News with Jimmy Cefalo* program several times in March and April to discuss coronavirus topics. Issues discussed included “Coronavirus Dos and Don’ts,”

“Kids and Coronavirus,” “Anxiety Spreads,” “Searching for Origins,” and “Putting Off Treatment Based on Fear.”

Lubov Nathanson, Ph.D., assistant professor, and **Lenora Sarría**, lab research assistant II, coauthored the article “Assessing Diagnostic Value of Micrnas from Peripheral Blood Mononuclear Cells and Extracellular Vesicles in Myalgic Encephalomyelitis/Chronic Fatigue Syndrome” in the March issue of *Scientific Reports*. Nathanson also coauthored the articles “Activation of Transposable Elements in Immune Cells of Fibromyalgia Patients” in the March issue of the *International Journal of Molecular Sciences* and “a-Synuclein Translocates to the Nucleus to Activate Retinoic-Acid-Dependent Gene Transcription” in the March issue of the *iScience* journal.



Christi M. Navarro, Ph.D., M.S., assistant professor of public health, gave birth to son Rhys Makai Batista on March 11.

FACULTY/STAFF ACHIEVEMENTS AND PRESENTATIONS



PANDYA



PARMAR



PETROSKY



PHILLPOTTS



REY



ROSEMAN-HALSBAND



ROZENFELD



SERNA



SNYDER



TEWARY

Naushira Pandya, M.D., CMD, FACP, professor and chair of the Department of Geriatrics, and **Bindu Mayi**, Ph.D., M.Sc., professor of microbiology, were the featured guests on the February 17 episode of the NSU TV program *Dateline Health* to discuss the emerging threat of COVID-19 in the United States. The episode, hosted by Frederick Lippman, R.Ph., Ed.D., chancellor, Health Professions Division, special projects, addressed the COVID-19 pandemic when there were only 11 reported cases in the United States at the time. The episode was taped on February 3—two weeks before the first confirmed case in Florida was reported.

Mayur S. Parmar, Ph.D., M.S., assistant professor of basic sciences, received an NSU President's Faculty Research and Development Grant. He will be conducting research focused on understanding the role of Rab GTPase Rab8a protein in tauopathies disorders, such as Alzheimer's disease.

Stephanie Petrosky, M.S., RDN, LDN, FAND, assistant professor and chair of the Department of Nutrition, was selected by the Accreditation Council for Education in Nutrition and Dietetics (ACEND) to serve a three-year term as an ACEND program reviewer. "This is a tremendous honor and speaks to how impressed the site team was with the programs Stephanie has developed with her KPCOM team," said Phyllis J. Filker, D.M.D., M.P.H., associate dean of undergraduate, graduate, and community education. "We are all very proud of what Stephanie has accomplished in a very

short time, including the creation of a Master of Science in Nutrition with an optional RD track and a Bachelor of Science in Nutrition, as well as a course for the OMS-1 students."

Luzan Phillpotts, D.O., M.P.H., assistant professor of family medicine, was a member of an interprofessional trio of university faculty members from throughout the United States that won the Public Health Excellence in Interprofessional Education Collaboration Award, which acknowledges and celebrates outstanding multidisciplinary efforts to impact community health. Phillpotts's team won for the project "An Interprofessional Approach to International Outreach Experiences." The U.S. Public Health Service and the Interprofessional Education Collaborative present the award annually to worthy recipients.

Irma Rey, M.D., assistant professor of environmental medicine, was elected CME chair of the American Academy of Environmental Medicine in October.

Janet L. Roseman-Halsband, Ph.D., M.S., R-DMT, associate professor of integrative medicine, was awarded the REAT (Registered Expressive Arts Therapist) and REACE (Registered Expressive Arts Consultant/Educator) credentials from the International Expressive Arts Therapy Association. Additionally, she received an NSU President's Faculty Research and Development Grant for her proposal "Listening to Traditional Medicine Healers. What Can We Learn About Wellness?"

Irina Rozenfeld, M.S.N., A.P.R.N., won third place honors for her poster presentation "Silent But Chronic: The Debilitating Disease of Myalgic Encephalomyelitis/ Chronic Fatigue Syndrome (ME/CFS) and the Power of OMT." The poster competition, hosted by the Louisa Burns Osteopathic Research Committee and the National Undergraduate Fellows Association, was held during the American Academy of Osteopathy's Convocation on March 12 in Colorado Springs, Colorado.

Claudia A. Serna, Ph.D., D.D.S., M.P.H., MCHES, CPH, director of the Master of Public Health program and assistant professor, authored the article "Self-Reported Factors Associated with Dental Care Utilization Among Hispanic Migrant Farmworkers in South Florida." The article, which was published in the *Journal of Public Health Dentistry*, can be accessed at onlinelibrary.wiley.com/doi/abs/10.1111/jphd.12364.

Samuel Snyder, D.O., FACP, FACOI, FASN, chair of the Department of Internal Medicine, was named a Top Nephrologist representing Davie, Florida, in the Top Doctors issue of *Florida Magazine*.

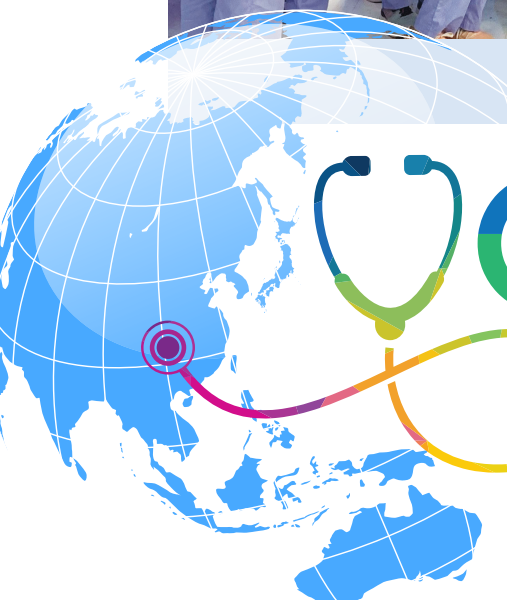
Sweta Tewary, Ph.D., M.S.W., M.S., director of the KPCOM's South Florida Geriatric Workforce Enhancement Program and assistant professor of medical education, recently earned her Master of Science in Management Information Systems degree with a concentration in business intelligence from the NSU College of Computing and Engineering.

NEW HIRES

ODALYS BAEZ, M.S., clinical research associate II, neuro-immune medicine
ANA CORNEJO, clinical research assistant/medical assistant, neuro-immune medicine
LISA TAFARES, M.Ed., administrative coordinator III, GWEP grant



Kristi Messer, second from left, and Shari Ramchal, fifth from left, celebrate with their students and others following a successful clinic day at GoGo Pediatrics in Ponce, Puerto Rico.



GLOBAL EDUCATION

Public Health Students Broaden Themselves Beyond the Classroom

By Scott Colton, B.A., APR

In early March, NSU's Dr. Kiran C. Patel College of Osteopathic Medicine (KPCOM) did its part to assist those in Puerto Rico affected by the powerful magnitude 6.4 earthquake—and the numerous aftershocks—that rocked the island on January 7, destroying homes and displacing thousands of citizens.

The Bachelor of Science in Public Health program's weeklong trip to Puerto Rico, which included seven KPCOM students and two faculty members, was a component of the program's Global Outreach course. "This public health outreach and applied learning experience is a practice-based field experience that involves participating in an underserved area in a public health capacity," said Kristi Messer, M.P.H., LCSW, director of the B.S. in Public Health program.

Working in conjunction with the International Medical Relief organization, the participating B.S. in Public Health program students and faculty members traveled to various mobile medical clinics throughout Puerto Rico to address some of the earthquake victims' unmet needs. "Our students prepared health education/health promotion materials and tailored their presentations to the needs of the community," said Shari Ramchal, M.P.H., assistant professor of public health and co-instructor of the Global Outreach course.



KPCOM student Matthew Calaigian, far right, shows children at the Boys and Girls Club how to properly brush and floss their teeth.

(continued on the next page)

According to Messer, care was provided to more than 300 patients alongside a team of about 40 health care providers, including physicians, nurses, emergency medical technicians, a dentist, a nurse practitioner, and public health professionals. Health education was delivered at every touch point, including during check-in, in waiting areas, and in collaboration with physicians during medical appointments. The sites they visited included two refugee camps, a government-housing complex serving low-income families, a local chapter of the Boys and Girls Club of America, a pediatric clinic, and a community for the elderly.

“At each location, the students had to decide what topics were the greatest need and how to tailor their presentation for their audience,” Messer explained. “Some students spoke Spanish, which was a great help, while others learned Spanish on the job. They also had the opportunity to shadow doctors, nurse practitioners, and dentists. The Spanish speakers also had the experience of being a translator during physical exams and mental health therapy sessions.”

One of the participating students, Cody Toloczko, shared a challenge she faced while in Puerto Rico. “I don’t speak Spanish fluently, which made it difficult to teach the health education material, such as conveying the importance of washing your hands and to do so properly,” she admitted. “At the beginning, I was apprehensive to do the hand-washing station by myself, but I pushed myself, and I was successful in connecting with the patients despite the language barrier.”

“It’s important for students to see and experience the connection between the concepts they learn in the classroom and how they play out in real life,” Messer concluded. “What are the barriers to care? How do policies and infrastructure impact individuals or the population? What can they do to make a difference? It was great to see the students be inspired and reenergized about their career path.”

LESSONS LEARNED

“Daily round-trip bus rides ranging from 6 to 10 hours gave our students many opportunities to connect with our health care team and to engage in candid, meaningful conversations regarding professional goals and aspirations. It also taught them the gifts of patience and perspective.

Improvising and adapting to each of the sites and the needs that were most pressing was a recurrent theme. At some sites, tables and chairs were lacking; at refugee sites, running water was limited and not easily accessed. The students matured as the week progressed, as they continued to navigate scenarios of incredible need, poverty, health inequities, and limited resources.

The patients were incredibly grateful for our time and resources and thanked us with gifts of smiles and hugs. One woman even blessed each of us with a rosary. We will carry these memories with us forever.”

—Kristi Messer

WHAT IS INTERNATIONAL MEDICAL RELIEF?

International Medical Relief (IMR) is a registered 501(c)(3) medical organization with nongovernmental status based in the United States. IMR provides mobile medical clinics and sustainable health education to underserved communities in 70 countries around the world. IMR offers short-term assignments for volunteer medical and dental professionals, students, and nonmedical volunteers to conduct medical and dental clinics that provide free expert care and health education in areas where it is limited or difficult to obtain.



KPCOM student Gabriela Acosta spends some quality time with two children while their parents see a physician.



KPCOM students Ryan Grundig, left, and Amanda Nazco pose with one of the instructors at the Boys and Girls Club, who learned what to do if a baby is choking.



KPCOM student Ryan Grundig uses a dental demonstration doll to teach a child proper dental hygiene.

STAFF SNAPSHOT

Getting to Know... Evelyn Martinez



Evelyn with her son Norland



KPCOM students celebrate Evelyn's birthday.

FAMILY FACTS

I have one son, Norland Martinez, who is 24 years old.

DATE OF HIRE

April 26, 2011

OFFICIAL NSU-KPCOM RESPONSIBILITIES

I am the outreach program coordinator for the international medical outreach trips. My responsibilities are to organize all the logistics of our trips, from airfare to transportation, while working closely with Dr. Elaine Wallace.

REASONS I ENJOY WORKING AT NSU-KPCOM

Working for an organization and someone like Dr. Wallace who values respect, believes, supports, and helps you be better every day is a blessing. The KPCOM gave me the opportunity to do what I love—helping others. The thing I enjoy the most is getting to work closely with our students and watch them reach their dreams of becoming doctors. This is home. I really enjoy coming to work and spending time with coworkers and students, especially our Cafecito Time. I am really blessed and grateful to be part of this great team.

WHAT DID YOU DO PROFESSIONALLY BEFORE JOINING NSU-KPCOM?

I worked for HPD Finance as an accounts payable specialist for five years. Before that, I worked for Applica Consumer Products/Spectrum Brands, Inc. in Miramar, Florida, as the travel coordinator.

GREATEST ACHIEVEMENT IN LIFE

My greatest achievement is to have raised my son by myself. I know that "It takes a village to raise a child," but my village was my son. I am blessed to have him and proud of the man he is today.

GETTING TO KNOW EVELYN MARTINEZ

(continued from previous page)

FAVORITE WAY TO UNWIND WHEN NOT AT WORK

Cooking, baking, and going to the beach are my favorite things to do. I also love spending time with my family, friends, and watching a good movie.

MY COWORKERS WOULD BE SURPRISED TO KNOW THIS ABOUT ME

I was diagnosed with severe rheumatoid arthritis more than 12 years ago.

THE MOST EXCITING THING THAT EVER HAPPENED TO ME

Swimming with a sea turtle in Dania Beach, Florida, and paragliding in Saputara, India.

WHEN I RETIRE, I PLAN TO

Enjoy time with family and friends and volunteer to help children in need.

THREE WORDS THAT BEST DESCRIBE ME

Empathetic, dependable, and enthusiastic



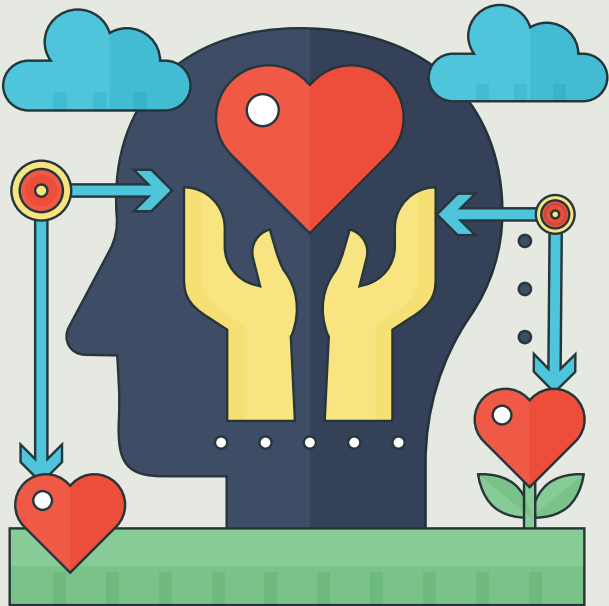
Evelyn enjoys a beautiful day at the Statue of Liberty in New York.

Evelyn is beloved by the KPCOM students who participate in the college's various medical outreach programs.



KPCOM WELCOMES INAUGURAL PGY1 CLASS into New ACGME-Accredited Psychiatry Program

By Janet Hamstra, Ed.D., Assistant Dean of Graduate Medical Education



I am proud to announce the six members of the inaugural PGY1 class of the new ACGME-accredited NSU-KPCOM psychiatry residency program based at the Orlando VA Medical Center. The residents will also rotate at Lake Correctional Institution, Central Florida Behavioral Hospital, and AdventHealth Orlando.

This residency program will build on the foundation of the sunseting and current AOA-accredited NSU-KPCOM psychiatry residency program and continue its close collaboration with the University of Central Florida/HCA GME psychiatry residency program.

We look forward to welcoming the following residents in late June.

Allison Cheng

University of South Florida
Health Morsani College of Medicine

Michael Delgado

Florida International University
Herbert Wertheim
College of Medicine

Alexander Goya

California Northstate University
College of Medicine

Eytan Hirsch

Midwestern University Chicago
College of
Osteopathic Medicine

Lucy Liu

University of Washington
School of Medicine

Quang Truong

Oregon Health and Science
University School of Medicine

Because of the timing of the ACGME Psychiatry Review Committee, we were unable to participate in the NRMP Match, but we were in the SOAP (Supplemental Offer and Acceptance Program). Many thanks to everyone who participated in the hectic SOAP process that allowed us to fill our six PGY1 slots with excellent applicants.



JAKE MARANVILLE



EMMA SUNDSTEDT

NUTRITION MANUAL FOR NSU STUDENT ATHLETES PUBLISHED ON NSUWORKS WEBSITE

The Department of Nutrition is proud to announce the published results of a student-led writing project—the *Nutrition Manual for NSU Student Athletes*. The publication targets freshman athletes who are new to campus and provides helpful information with examples of energy requirements, macronutrients, meal timing and campus dining options, snack ideas, eating on a budget, and travel ideas.

From strength training to endurance running and everything in between, the manual can help students put good nutrition to work in sports performance and general wellness. Steve Orris, M.Ed., NSU assistant athletic director for sports performance, initially proposed the collaboration to help student athletes in strength and conditioning programs.

The nutrition manual group project was overseen by Marilyn Gordon, Ed.D., RDN, CSSD, LDN, KPCOM assistant professor and course director for Advanced Sports Nutrition. It was created by enthusiastic graduate nutrition students Kaitlin Flaskerud, RDN, LDN, lead editor; Katie Emerson, B.S.; Stephanie Fonseca, B.S., NASM-CPT; Angel Marquez, B.S.; and Alejandra Velandia, M.S.

Special thanks go to NSU's Writing and Communication Center, which helped shape the manual into a great resource. The nutrition manual is available to download on the NSUWorks website at nsuworks.nova.edu/hpd_com_faculty_articles/1581/.



KPCOM COVID-19 CARES FUND RAISES MORE THAN \$15,000



What started as a random act of kindness involving a woman paying it forward at a grocery store turned into a collaborative effort as the KPCOM showed heart and a willingness to help.

The initiative, led by the KPCOM's dean Elaine M. Wallace, D.O., M.S.⁴, occurred after a double encounter while putting groceries in her car. After a woman commented on the lovely flowers Wallace was buying, a second encounter occurred in the parking lot that same day when Wallace gave her a flower—much to the woman's delight.

"I am going to visit my 90-year-old mother. She will love this," the woman said. "You know, I was just in line, and I paid for the groceries of an elderly man after his credit card was denied twice. These are tough times for people."

That act of kindness led Wallace to look within and see how she could help in this time of need, resulting in the KPCOM COVID-19 Cares Fund. The money raised through pledges and contributions will benefit those in the KPCOM and HPD community monetarily affected due to the COVID-19 pandemic and other hardships. Since the fund was initiated in late March, three payments have been allocated to individuals/families in need.

"I want to thank you all as you continue to contribute to the fund," Wallace said. "We have collected more than \$15,000 as of late May in pledges and contributions. It is refreshing to see us reach out to help one another."

BACHELOR OF SCIENCE IN HUMAN NUTRITION RECEIVES CANDIDACY FOR ACCREDITATION

The Bachelor of Science in Human Nutrition program received candidacy for accreditation from the Accreditation Council for Education in Nutrition and Dietetics on March 19. The B.S. in Human Nutrition program will now offer undergraduate students a professional outcome as registered nutrition and dietetics technicians.

The decision followed an extensive peer review of self-study documents, as well as a site visit. The program will begin this new specialization option in the fall of 2020 by offering 15 seats to interested candidates. Students who enter the approved professional practice pathway will take specified courses and gain 300 hours of supervised experiential learning.

Joining the Future Education Model Graduate program for registered dietitian nutritionists, this second successful accreditation achieved by the KPCOM in two years highlights the Department of Nutrition as a unique provider of quality education and training in this field.



NSU Campuses

Host

OPEN MIC

TALENT NIGHT

Music in the Air




Led by Paula Anderson-Worts, D.O., M.P.H., assistant dean of faculty and alumni affairs, along with emcees Shauntae Roberts, assistant to the assistant dean of faculty and alumni affairs, and Aixa Vargas, M.B.A., project coordinator, KPCOM faculty and staff members displayed their talents in song, dance, and performances to remember.



Kenneth Johnson, D.O., FACOOG, executive associate dean, set the tone at the Tampa Bay Regional Campus with his heartfelt poem dedicated to Shauntae Roberts titled *My Heart Light*, followed by a Jola African dance featuring public health faculty members, along with a beautiful piece from Leslie Feist titled *Honey Honey* performed on a harp by Taina Rivera, administrative coordinator I.

The vocal talents of Sasha Saunders, credentialing specialist; Paula Waziry Ph.D., assistant professor of biochemistry; and Melissa Felix, administrative coordinator, had the audience in awe as music from Ella Fitzgerald and Whitney Houston, as well as opera selections, filled both campuses with song.



TALENT NIGHT



The music continued as emcees Vargas and Roberts got everyone on their toes by leading the crowd favorite *Wobble* dance with an osteopathic flair.

The final performances of the night included a Beatles tribute by family medicine faculty members showing up in full force with their vibrant guitars rocking to the music. Anderson-Worts ended the event in stylish glasses and wig with a reading of *Touched by an Angel* by Maya Angelou in honor of Black History Month.



Anticipation filled the room as the judges came to their conclusion, with Saunders' acapella vocals of *Lullaby of Birdland* by Ella Fitzgerald taking first place. Rivera earned the runner-up award, while the Department of Family Medicine placed third. Honorable mention honors went to Deepesh Khanna, Ph.D., assistant professor of anatomy, for his energetic participation throughout the night.

Special thanks to the trio of faculty and staff members who volunteered to judge the event: Delia Harper-Celestine, Ed.D., M.P.H., assistant dean of student affairs; Sandi Scott-Holman, D.O., assistant professor of family medicine; and Joey Garcia, B.S., medical communications coordinator.



M.S. IN MEDICAL EDUCATION PROGRAM PARTNERS WITH FISCHLER ACADEMY FOR COMBINED DEGREE OPTION

In 2021, the KPCOM's Master of Science in Medical Education program will collaborate with the Abraham S. Fischler College of Education and School of Criminal Justice's innovative Fischler Academy (FA) program to offer students an opportunity to pursue a career in health professions education.

The program's vision, which was crafted by Elaine M. Wallace, D.O., M.S.⁴, KPCOM dean, and Kimberly Durham, Psy.D., Fischler College dean, will allow FA students to expand their options for a graduate degree once they have completed their undergraduate degree in education.

The Fischler Academy is a combined bachelor's and master's degree program designed for traditional first-time college students who wish to become teacher leaders. Students enrolled in the Fischler Academy are able to earn a bachelor's and a master's degree in just four years.

The M.S. in Medical Education degree can be completed in as little as one year, which makes it a good fit for FA students, although they will have additional time to complete, if needed. The medical education program will give FA students an attractive option to pursue an education-related degree outside of the traditional K-12 options.

"It's really wonderful to be part of a vision that creates an interprofessional opportunity for NSU students," said Kimberly Valenti, M.Ed., director of the medical education program. "Undergraduate education students who have an interest in the health professions will now be able to specify that interest to realize their professional goals."



GRANTS UPDATE

Opioid Curriculum Integration Initiative (OCII)/ Medical College Curriculum Development and Training for the Implementation for Florida's State Opioid Response

AMOUNT
\$250,000

PRINCIPAL INVESTIGATOR
James Howell, M.D., M.P.H.

PROJECT PERIOD
March 18, 2020–September 29, 2020

Defining and Characterizing GWI Pathobiology Using Longitudinal Brain Imaging Biomarkers of White Matter Integrity and Hemodynamic Response

AMOUNT
\$30,728

PRINCIPAL INVESTIGATOR
Nancy Klimas, M.D.

PROJECT PERIOD
September 15, 2019–September 14, 2022

Due to the confidentiality clauses of certain grant agreements, we are only permitted to publish funded grants that are listed monthly in the Office of Sponsored Programs administrative report package.



Dr. Kiran C. Patel College
of Osteopathic Medicine
**NOVA SOUTHEASTERN
UNIVERSITY**

Nova Southeastern University is accredited by the Southern Association of Colleges and Schools Commission on Colleges to award associate's, baccalaureate, master's, educational specialist, doctorate, and professional degrees. Contact the Commission on Colleges at 1866 Southern Lane, Decatur, Georgia 30033-4097 or call 404-679-4500 for questions about the accreditation of Nova Southeastern University.

Nova Southeastern University admits students of any race, color, sex, age, nondisqualifying disability, religion or creed, sexual orientation, gender, gender identity, military service, veteran status, or national or ethnic origin to all the rights, privileges, programs, and activities generally accorded or made available to students at the school, and does not discriminate in administration of its educational policies, admissions policies, scholarship and loan programs, and athletic and other school-administered programs. Any such acts are unacceptable and strictly prohibited by the university.